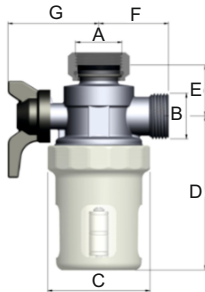


The filter unit is used to remove the harmful contaminants in water in central heating systems, especially sand and rust particles. It helps to protect the water pump, valves and other pipelines of the heating system. The special design of the filter unit can be installed horizontally or vertically. Also block heat exchangers, radiator tips or pipes, resulting in lower system separator. It allows excellent filtration and deposition of impurities in the filter tank. Removal of impurities can occur during normal operation of the installation.



Dimensions:

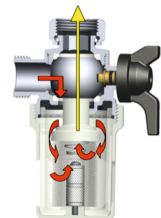
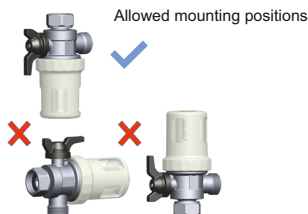
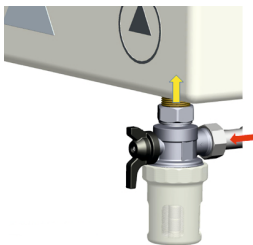
Index	A (cal)	B (cal)	C (mm)	D (mm)	E (mm)	F (mm)	G (mm)
G0001	3/4"	3/4"	58	87	29	39,5	51,5

Technical Specifications:

- Body : PA66;
- Neodymium magnet :5000 G
- Filter mesh diameter: 1,1x1,5 mm
- Medium: water
- Temperature range (min-max) 0-90 °C
- Max input pressure: 3bar
- Connection: 3/4" G
- KVS: 4,4 m /h
- The arrow on the body indicates the direction of the water flow.

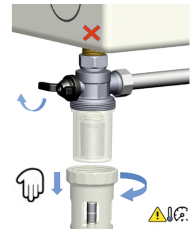
Mounting Recommendations:

1. Before installing the filter, check the operating parameters of the system: pressure and temperature to make sure they fall within the working range of the filter.
2. Install the valve according to the water direction sign on the valve body.



Cleaning and Maintenance Method

1. Turn off the boiler, close all the valves on the boiler system.
2. Wait the water to be cooling.
3. Remove the magnet from the filter socket.
4. Let the water flush and clean the filter to remove deposits and dirties.
5. Install the filter unit after cleaning.



SOLLAU s.r.o.

Hřivínův Újezd 212,763 07 Velký Orechov, Czech Republic.

info@sollau.cz www.sollau.com

Tel: +420 576 013 873