

TECHNICAL MANUAL



I. GENERAL PRODUCT INFORMATION

The Magnetic Filter is specially designed for central heating system. It can remove almost all the harmful black suspended iron oxide slag accumulated in all heating system and protect the piping equipment of the system

It is advised to install the magnetic filter on the return circuit, at the inlet of the boiler, in order to protect it from any impurities in the system, especially during the start-up phase.

IMPORTANT SAFETY INSTRUCTIONS:

- The antimagnetite filter contains powerful magnets, must be get away from all electronic devices, bank CARDS and other magnetic devices.
- The antimagnetite filter contains powerful magnets and should always be used with caution if people fitted with a pacemaker.
- The antimagnetite filter is a pressurized device that must be release pressure before maintenance.
- The antimagnetite filter device could be very hot during operation, be careful.

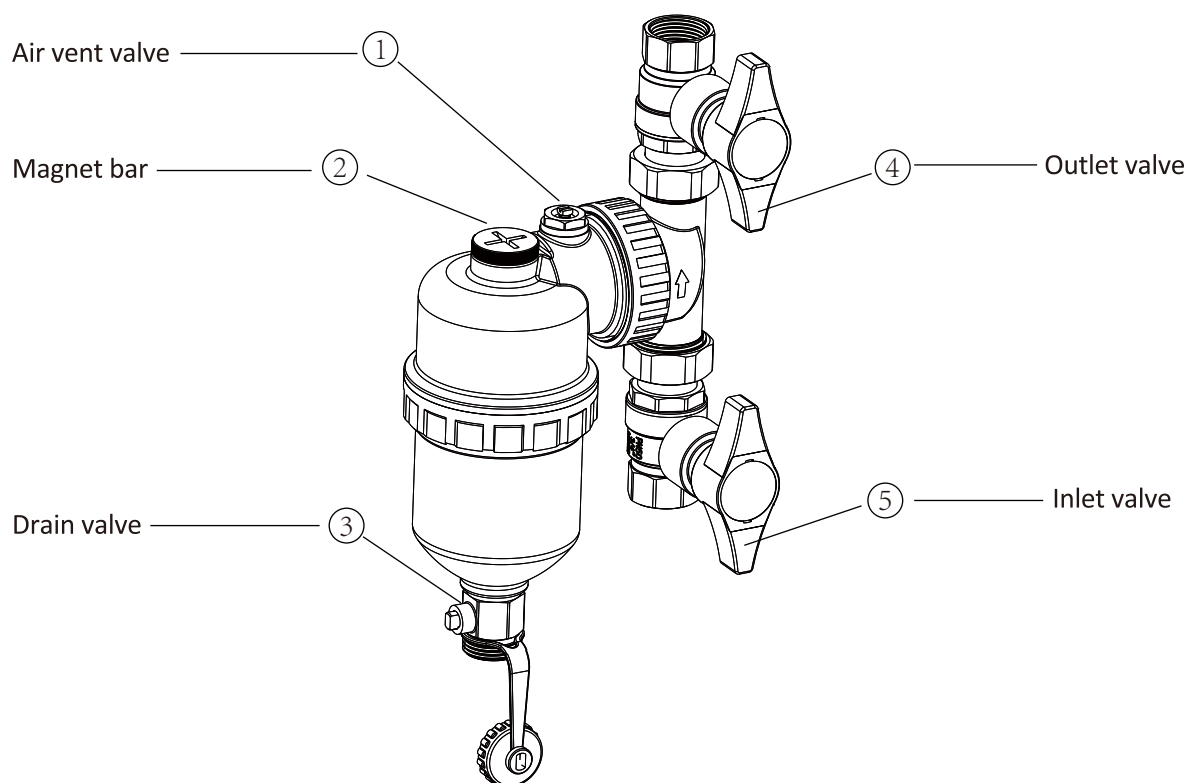
In order to maintain grounding continuity in accordance with the current IEE regulations, appropriate grounding cables should be installed on the pipe where necessary to bypass the product.

IMPORTANT MOUNTING INSTRUCTIONS:

Filters can be installed in a variety of ways, for example : be installed in the location on the main pipeline. However, it is recommended to be installed after the last radiator and before the boiler for the best protection effect.

Notice: It is important to have adequate maintenance space when determining a suitable installation location.

II. STRUCTURE INTRODUCTION

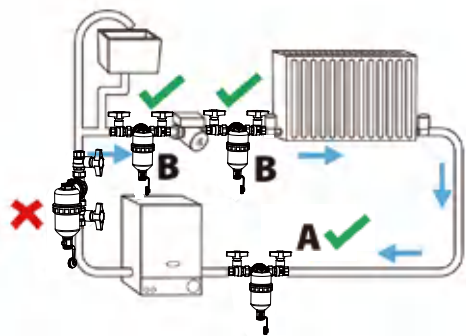


III. MOUNTING RECOMMENDATIONS

The following instructions are help the engineer to install and maintain the Magnetic Filter safety and efficiently and should always follow this.

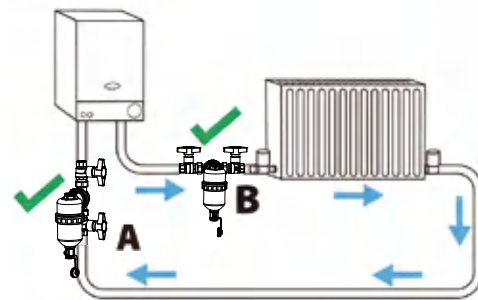
Recommended installation location :

Open discharge system



(Figure 1)

Combination/seal system



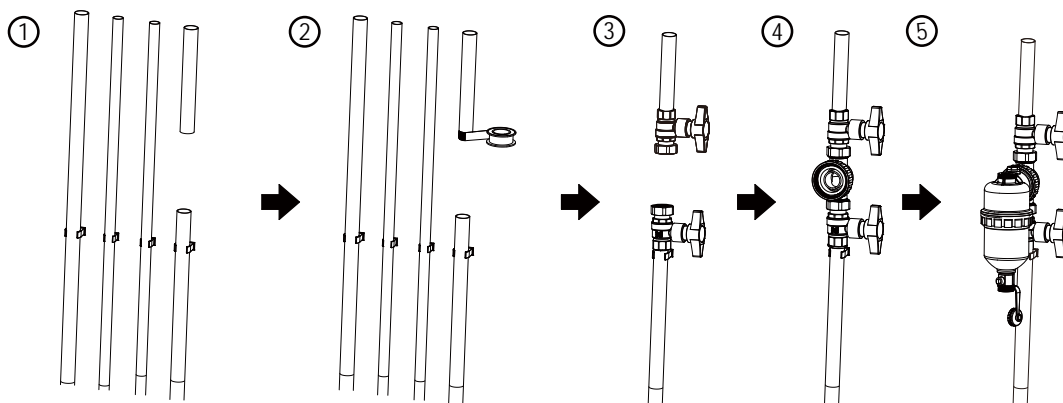
(Figure 2)

In above two legends, location A is recommended as the best location for installation. Position B is suitable for piping with narrow space.

After washing the system with cleaning agent, be sure it has been installed and flushed in the return line of the system to achieve the best boiler protection effect.

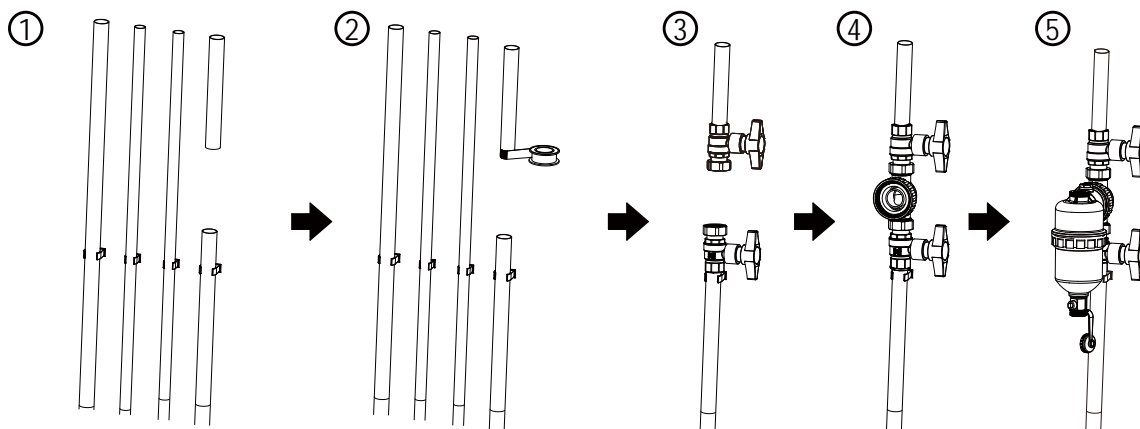
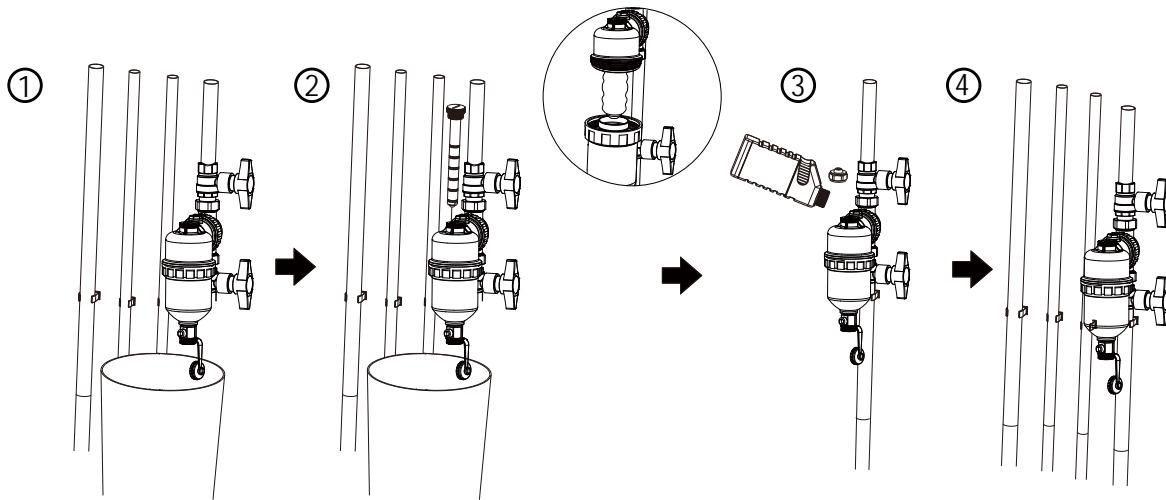
IV. INSTALLATION METHOD

- 1..Cut and remove the part of the pipe according to the product installation lenght
2. Wrap sealing material around joint thread
3. Tighten the valve to the pipe
4. Install the body connection and tighten it
5. Adjust the angle and fix the filter
6. Make sure the valve is open after the water is through open the air vent to exhaust and close it



V. MAINTENANCE METHOD

1. Close the outlet valve
2. Open the drain valve, take out the magnet bar
3. Open the drain valve, remove the air vent valve, pour in pipeline cleaning protectant
4. Tighten the air vent valve and open the inlet and outlet valve at the same time, close the air vent valve



Maximum working pressure : 12 bar

This device is only installed by qualified personnel!

SOLLAU s.r.o.

Hřivínův Újezd 212, 763 07 Velký Orechov, Czech Republic.

info@sollau.cz www.sollau.com

Tel: +420 576 013 873